

HOMESTEAD  
COMMUNITY CONCERTS  
P.O. Box 901082  
Homestead, Florida 33090-1082

*Address Service Requested*

# HOMESTEAD COMMUNITY CONCERTS

*2009-2010 Season*

After 31 years in the old South Dade High School Auditorium, we are happy this 2nd year to be in the brand new auditorium and all of the amenities we find there, including the padded seats and excellent acoustics. The backstage area is great for the artists with well-appointed dressing rooms.



Seats adjacent to wheelchair cutouts will be reserved for family members.

*For further information:*

305-235-8818 or 305-253-6620

P.O. Box 901082

Homestead, Florida 33090

[www.homesteadconcerts.com](http://www.homesteadconcerts.com)

[info@homesteadconcerts.com](mailto:info@homesteadconcerts.com)

# HOMESTEAD COMMUNITY CONCERTS

*2009-2010  
Performance Schedule*

**CHRISTMAS WITH  
SOVEREIGN BRASS**

*Saturday, December 12, 2009*

*7:30 p.m.*

**#1 HITS OF THE 60's**

*Saturday, January 16, 2009*

*7:30 p.m.*

**FROM GALWAY TO BROADWAY**

*Saturday, February 6, 2010*

*7:30 p.m.*

**WAR BONDS:  
THE SONGS AND LETTERS OF  
WWII**

*Sunday, March 28, 2010*

*2:30 p.m.*

## CHRISTMAS WITH SOVEREIGN BRASS

Saturday, December 12, 2009 • 7:30 p.m.



Sovereign Brass was formed in 1994 and continues to bring high quality brass music to U.S. audiences. Based in central Florida, its members also perform with the Orlando Philharmonic Orchestra, Orlando Opera, World

Class Brass at Disney's Epcot Center, the Walt Disney World Orchestra, and other regional performing groups in the southeast. Other credits for individual members include touring Broadway shows, performances with the Woody Herman Orchestra, and recordings for TV, radio, and motion pictures.

## #1 HITS OF THE 60's

Saturday, January 16, 2009 • 7:30 p.m.



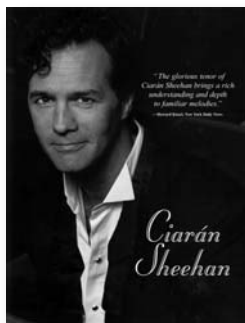
What a decade of Music! Who can forget The Four Seasons, Beach Boys, Rolling Stones, Sonny and Cher, The 5th Dimension, Petula Clark, Neil Sadaka, Mamas and the Papas,

Ray Charles - the list goes on and on. From the opening medley to the finale, this show will transport you back in time. The sets, state-of-the-art light and sound systems, the talented young singers, dancers, and musicians and, of course, the "groovy" costumes, are all captured in this "hip" and "far-out" production on tour from Branson, Missouri.

For more information on these shows,  
or to purchase tickets online,  
visit our website:  
[www.homesteadconcerts.com](http://www.homesteadconcerts.com)

## FROM GALWAY TO BROADWAY

Saturday, February 6, 2010 • 7:30 p.m.



Discovered by legendary Broadway producer Hal Prince, Dublin-born Ciarán Sheehan has been performing on Broadway, first as the romantic hero Marius in "Les Miserables", then later as the dashing Raoul in "The Phantom of the Opera". After two years as Raoul, Ciarán then starred in the

coveted role of The Phantom. During the course of two and a half years, he performed that role in over 1,000 performances, both on Broadway and in Toronto. Ciarán is currently performing in concert with the enchanting Broadway star, Gay Willis, and pianist Eily O'Grady Patterson. Together, they bring a special Irish romance to the world's most beautiful music.

## WAR BONDS: THE SONGS AND LETTERS OF WWII

Sunday, March 28, 2010 • 2:30 p.m.



"War Bonds" is a musical journey through a war that redefined the world. This multi-media living history cabaret is interspersed with personal letters from the front and headline news of the period. Actual veterans' stories create a sentimental journey back through the days when blackouts and rationing were a small sacrifice in

order to obtain freedom. The full-length live stage show is now airing on PBS across the country. The show has been filmed as a companion piece to Ken Burns' "The War".



"With the support of the Miami-Dade County Department of Cultural Affairs, the Cultural Affairs Council, the Mayor, and the Miami-Dade County Board of County Commissioners."

All concerts are held at South Dade High School Auditorium • 28401 SW 167th Avenue • Homestead, Florida  
Dates and concerts are subject to change. For further information, call 305-235-8818 or 305-253-6620

Tickets mailed before first performance.

A Bonus Single-Show Ticket will be given as a Thank You to those who subscribe by June 1, 2009.

Name/Address same as on label  Please change as shown

Mr./Mrs./Miss/Ms. \_\_\_\_\_

Florida Address \_\_\_\_\_

City/State/Zip \_\_\_\_\_

Phone \_\_\_\_\_ Email \_\_\_\_\_

If you have a second house, we would appreciate that address and dates at residence so we can send our information to you properly.

Dates from \_\_\_\_\_ to \_\_\_\_\_

Non-Florida Address \_\_\_\_\_

City/State/Zip \_\_\_\_\_

### SEASON TICKET FEES:

New  Renewal  
To join, fill in application and mail with payment.  
\_\_\_\_\_ Adult, \$50 each \_\_\_\_\_ Student (Full-time), \$15 each

We are able to provide outstanding musical events for a reasonable ticket fee because of the generosity of our special contributors. We invite you to support this worthwhile community effort with an additional contribution.

Grand Benefactor (\$1,500.00 or more) \$ \_\_\_\_\_

Benefactor (\$1,000.00 - \$1,499.00) \$ \_\_\_\_\_

Sponsor (\$500.00 - \$999.00) \$ \_\_\_\_\_

Patron (\$100.00 - \$499.00) \$ \_\_\_\_\_ Total Enclosed \$ \_\_\_\_\_

Make check payable to:

Homestead Community Concert Association  
P.O. Box 901082 • Homestead, FL 33090-1082

A Volunteer, Non-Profit Organization

To pay by credit card, call 305-253-6620 or go to [www.homesteadconcerts.com](http://www.homesteadconcerts.com)